



Survey

Dept 1 Department **LAMINATION**
 XEM # 8400 Equipment **LAMINATION PRESS LINE 5**

Model **PM4-450**Serial No **PM4-450-30266**Make **MINSTER**

Part	Maintenance Point / Task	Recommended Product / Frequency
DRIVE ELECTRIC MOTOR BEARING	PRESSURE GUN FITTINGS GREASE - SEE INSTRUCTIONS	ENLUBE S-CHEM 10M-2 SEMIANNUALLY Ref Point: 1 Pic: C7G11711V
FLYWHEEL	PLUGS (2) LUBRICATE REMOVE FLYWHEEL COVER. THERE ARE TWO PLUGS THAT NEED TO BE LOCATED. REMOVE BOTH PLUGS. INSERT PRESSURE GUN FITTING AT FIRST PLUG LOCATION AND ADD 5 OUNCES OF GREASE. REMOVE PRESSURE GUN FITTING. MOVE TO WHERE THE SECOND PLUG WAS REMOVED, INSERT PRESSURE GUN FITTING AND ADD 5 OUNCES OF GREASE. REMOVE PRESSURE GUN FITTING. REPLACE BOTH PLUGS. REPLACE FLYWHEEL COVER.	ENLUBE S-CHEM PAO-EPXT-00 SEMIANNUALLY Ref Point: 2 Pic: C7G11711V
CENTRAL LUBRICATING SYSTEM	RESERVOIR (110 GALS) CHECK & KEEP FULL TO LEVEL CHECK SIGHT GAGE. 1 AT EACH END OF PRESS. OIL FILL ON EACH END OF PRESS.	ENLUBE HVI-344EP DAILY Ref Point: 3 Pic: C7G11712V
	DRAIN AND REFILL OR PER EL'S USED OIL TESTING PROGRAM CHECK SIGHT GAGE. 1 AT EACH END OF PRESS. OIL FILL ON EACH END OF PRESS.	ENLUBE HVI-344EP ANNUALLY Ref Point: 3 Pic: C7G11712V
CENTRAL LUBRICATION IN LINE FILTER (25 MICRON)	CHANGE SEMIANNUALLY OR PER EL'S USED OIL TESTING PROGRAM	SEMIANNUALLY Ref Point: 4 Pic: C7G11713V
CENTRAL LUBRICATION OFF LINE FILTER (20 MICRON)	CHANGE SEMIANNUALLY OR PER EL'S USED OIL TESTING PROGRAM	SEMIANNUALLY Ref Point: 5 Pic: C7G11713V
CENTRAL LUBRICATION ELECTRIC MOTOR BEARING	PRESSURE GUN FITTING GREASE - SEE INSTRUCTIONS ***** Continued Next Page *****	ENLUBE S-CHEM 10M-2 SEMIANNUALLY Ref Point: 6 Pic: C7G11713V

FREQUENCIES FOR PERFORMING LUBRICATION ASSIGNMENTS ARE BASED ON AN 8 HOUR/DAY OPERATION UNLESS OTHERWISE STATED

Provided By ENGINEERED LUBRICANTS CO.

Survey Date 08/19/04

Revision Date 07/20/11



Survey

Dept 1 Department **LAMINATION**
XEM # 8400 Equipment **LAMINATION PRESS LINE 5**

Model **PM4-450**
Serial No **PM4-450-30266**

Make **MINSTER**

Part	Maintenance Point / Task	Recommended Product / Frequency
HYDRAULIC ELECTRIC MOTOR BEARING	PRESSURE GUN FITTING GREASE - SEE INSTRUCTIONS	ENLUBE S-CHEM 10M-2 SEMIANNUALLY Ref Point: 7 Pic: C7G11714V
HYDRAULIC FILTER (20 MICRON)	CHANGE SEMIANNUALLY OR PER EL'S USED OIL TESTING PROGRAM	SEMIANNUALLY Ref Point: 8 Pic: C7G11714V
HYDRAULIC FILTER (0.5 MICRON)	CHANGE SEMIANNUALLY OR PER EL'S USED OIL TESTING PROGRAM (LOCATED BEHIND LEFT HAND REAR DOOR ON CROWN)	SEMIANNUALLY Ref Point: 9 Pic: C7G11711V
COUNTER BALANCE DRAINS (2) (1 AT EACH END OF PRESS)	DRAIN	DAILY Ref Point: 10 Pic: C7G11712V
AIR LINE FILTER	CHANGE	SEMIANNUALLY Ref Point: 11 Pic: C7G11715H

Sub-Assembly **FEED (MFG. MINSTER)**

Model: MHFS3-350

Serial No: 1870011

Part	Maintenance Point / Task	Recommended Product / Frequency
ELECTRIC MOTOR BEARING	SEALED	Ref Point: 12 Pic: C7G11716V
CONNECTING GEARS	RESERVOIR CHECK & KEEP FULL TO LEVEL	ENLUBE 85-EP MONTHLY Ref Point: 13 Pic: C7G11717V
	DRAIN AND REFILL	ENLUBE 85-EP ANNUALLY Ref Point: 13 Pic: C7G11717V
COUNTER BALANCE	DRAIN	WEEKLY Ref Point: 14 Pic: C7G11717V

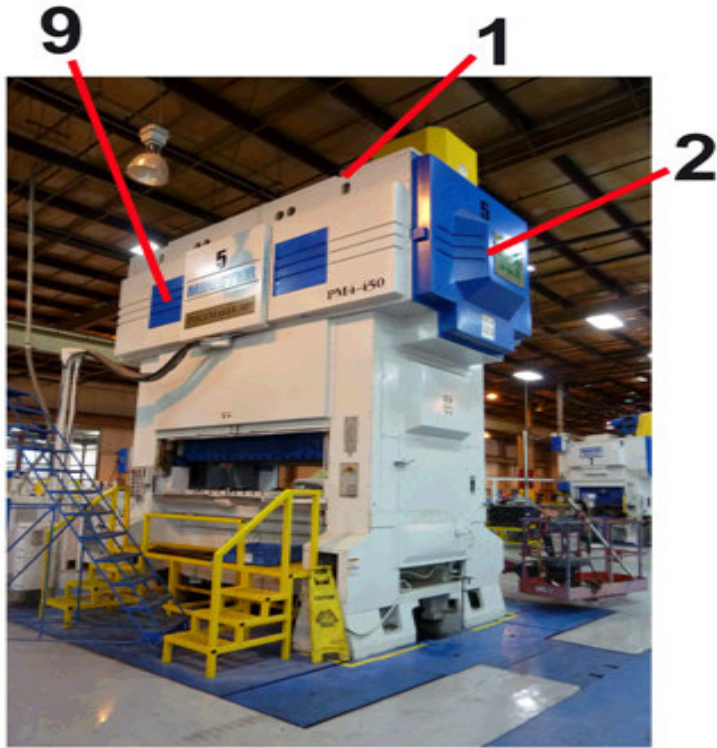
FREQUENCIES FOR PERFORMING LUBRICATION ASSIGNMENTS ARE BASED ON AN 8 HOUR/DAY OPERATION UNLESS OTHERWISE STATED

Provided By **ENGINEERED LUBRICANTS CO.**

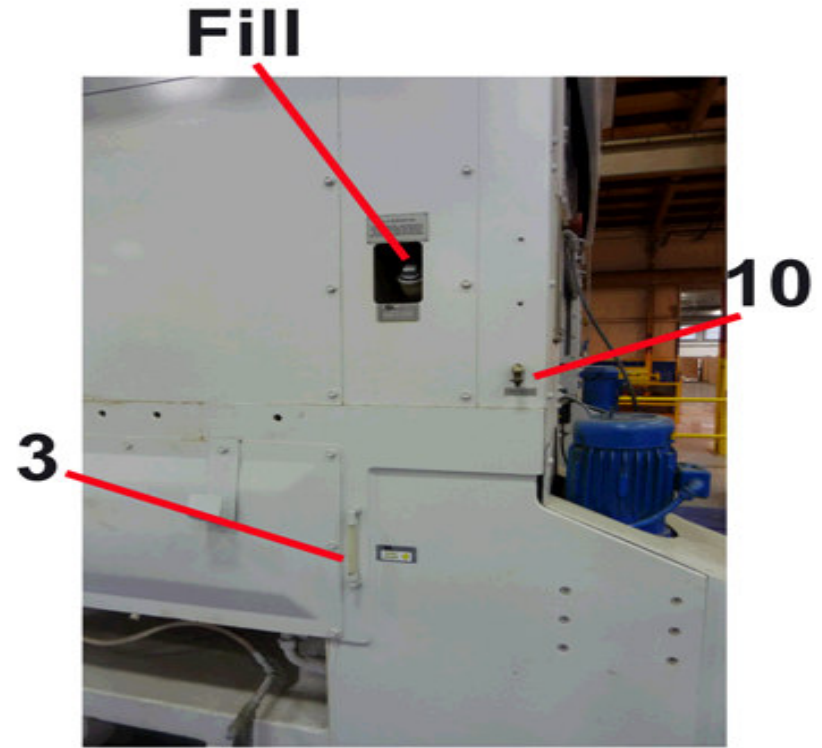
Survey Date 08/19/04

Revision Date 07/20/11

XPond Equipment Maintenance SURVEY IMAGES



C7G11711V



C7G11712V

Use reference numbers on survey or work order to identify the points indicated.

XEM: 8400

Equipment: LAMINATION PRESS LINE 5

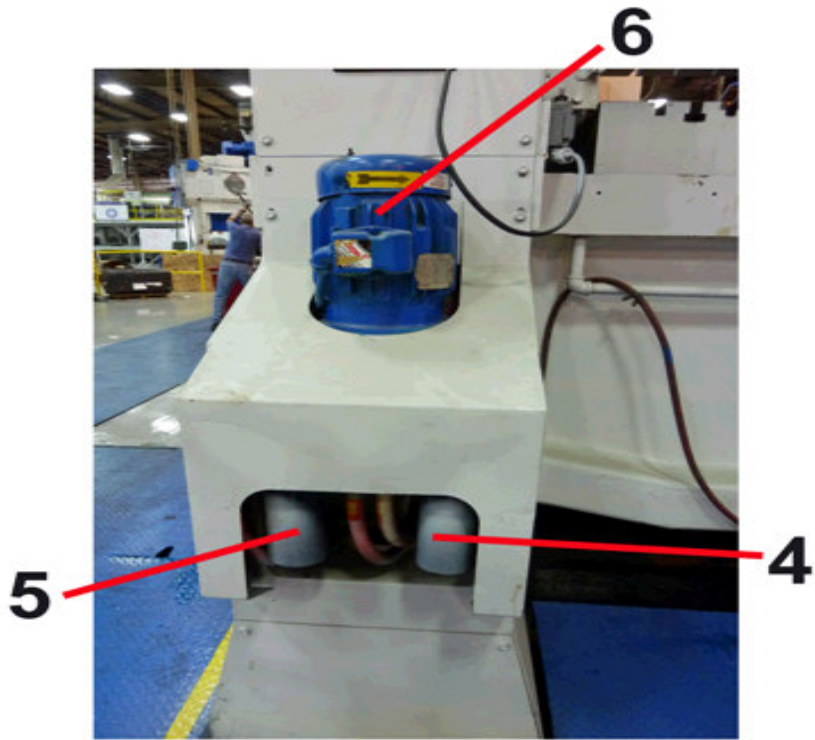
Model: PM4-450

Serial No: PM4-450-30266

Make: MINSTER

Department: LAMINATION

XPond Equipment Maintenance SURVEY IMAGES



C7G11713V



C7G11714V

Use reference numbers on survey or work order to identify the points indicated.

XEM: 8400

Equipment: LAMINATION PRESS LINE 5

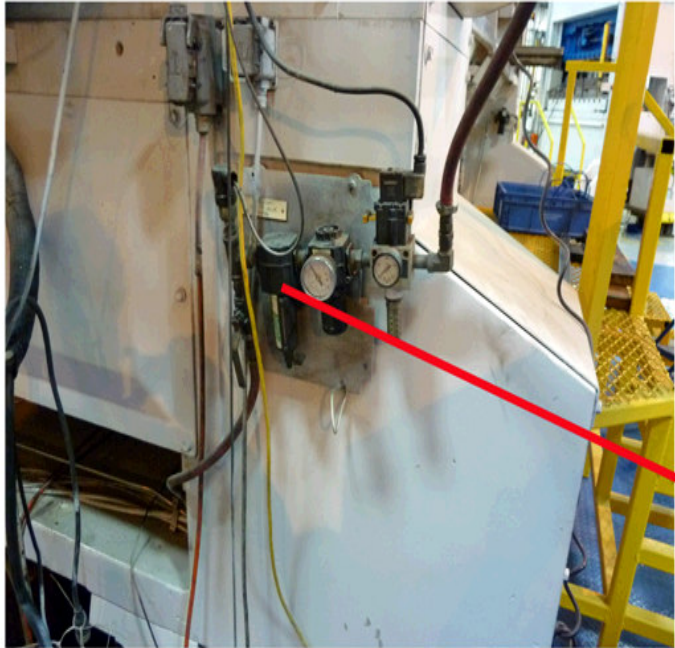
Model: PM4-450

Serial No: PM4-450-30266

Make: MINSTER

Department: LAMINATION

XPond Equipment Maintenance
SURVEY IMAGES



11

C7G11715H



12

C7G11716V

Use reference numbers on survey or work order to identify the points indicated.

XEM: 8400

Equipment: LAMINATION PRESS LINE 5

Model: PM4-450

Serial No: PM4-450-30266

Make: MINSTER

Department: LAMINATION

XPond Equipment Maintenance
SURVEY IMAGES



C7G11717V

Use reference numbers on survey or work order to identify the points indicated.

XEM: 8400

Equipment: LAMINATION PRESS LINE 5

Model: PM4-450

Serial No: PM4-450-30266

Make: MINSTER

Department: LAMINATION